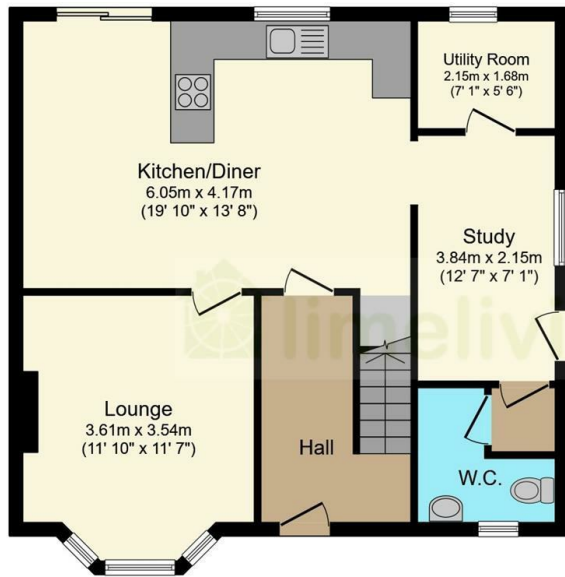




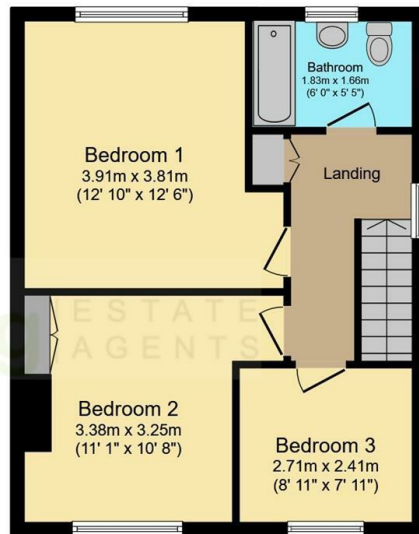
15 Crich Road, Inkersall, Chesterfield, S43 3SN

Offers Around £225,000

- Corner Plot Semi Detached House
- Lounge
- THREE Bedrooms
- NO CHAIN!
- Popular Location
- Recently Fitted Kitchen Diner
- Bathroom
- Well Presented Throughout
- Downstairs WC, Study and Utility Room
- Driveway & Gardens



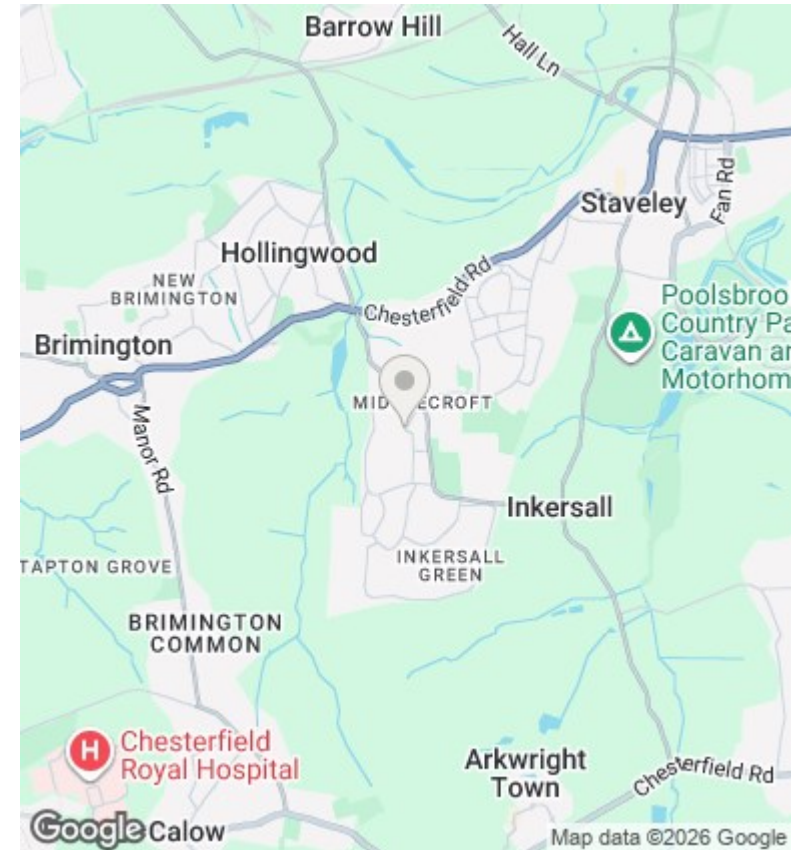
Ground Floor
Floor area 65.9 sq.m. (709 sq.ft.)



First Floor
Floor area 47.3 sq.m. (509 sq.ft.)

Total floor area: 113.1 sq.m. (1,218 sq.ft.)

This floor plan is for illustrative purposes only. It is not drawn to scale. Any measurements, floor areas (including any total floor area), openings and orientations are approximate. No details are guaranteed, they cannot be relied upon for any purpose and do not form any part of any agreement. No liability is taken for any error, omission or misstatement. A party must rely upon its own inspection(s). Powered by www.Propertybox.io



Directions

Viewings

Viewings by arrangement only. Call 01246 275 559 to make an appointment.

Council Tax Band

A

EPC Rating:

D

Energy Efficiency Rating		Current	Potential
<i>Very energy efficient - lower running costs</i>			
(92 plus) A			
(81-91) B			
(69-80) C			75
(55-68) D		58	
(39-54) E			
(21-38) F			
(1-20) G			
<i>Not energy efficient - higher running costs</i>			
England & Wales		EU Directive 2002/91/EC	